

An update: mental health inpatient beds

Introduction

In December 2020, we provided an update paper on Southern Health's mental health bed capacity for the January 2021 HASC meeting. It included information on how we are supporting the reduction in out of area placements by investing in more beds locally.

The paper shared an overview of our plans to open a new 10-bed female PICU (psychiatric intensive care unit) at Antelope House in Southampton and a new 18-bed female acute mental health ward at Parklands Hospital in Basingstoke.

This latest paper is intended as an update on progress towards opening these new beds.

Background

A key priority for Southern Health is to ensure that people who need admission to a mental health hospital are able to access this care close to home.

As a result, we have ambitious plans to create additional mental health beds across Hampshire:

- A new 10-bed female psychiatric intensive care unit (PICU) at Antelope House in Southampton, called Abbey Ward.
- A new 18-bed female acute mental health ward at Parklands Hospital in Basingstoke, called Cherry Ward.

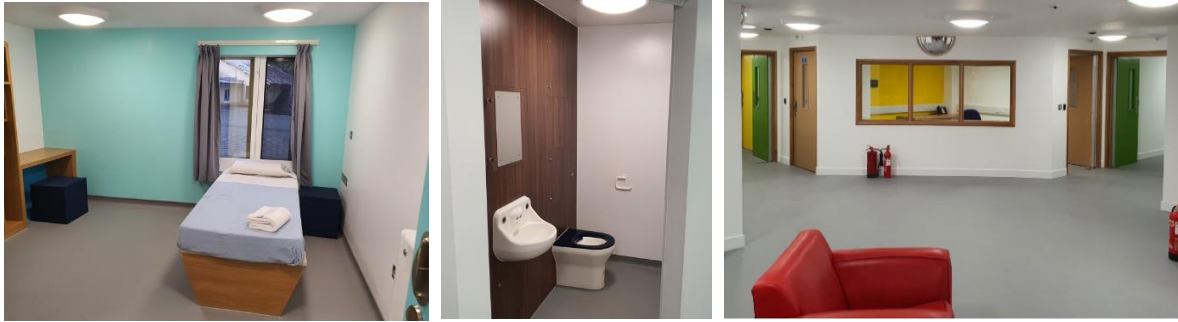
Progress – Parklands

Parklands Hospital successfully opened its new female acute mental health ward to patients on 13 August 2021. A formal celebration event is planned for later in the year, mostly likely November, and HASC members will be invited to attend and tour the new facility.

Cherry Ward is located on the first floor of Parklands Hospital (previously office space) and boasts:

- 18 en-suite bedrooms
- A sensory room
- An art room and a craft room
- An occupational health kitchen
- IT suite
- A modern staff-room and multiple meeting rooms.

More than 100 patients with specialist mental health needs helped to design the layout of the new ward, the look and feel of the therapeutic corner, the patient lounge and staff areas. They also helped to choose the colours, decoration and furniture to help make the new ward (see images overleaf) the best environment for the people who will be using the service.



As this new ward is female only, our Parklands acute ward, now known as Juniper Ward, will become a male only ward.

Progress – Antelope House

At Antelope House, phased building work has now begun (see detail below).

As a result, it is anticipated that the female PICU will open at the turn of the year and members of the HASC will be invited to the opening to tour the new mental health facilities at this time.

Relocation of 136 Suite

In order to begin Abbey Ward construction work, we first needed to relocate our existing 136 Suite (which is currently in an otherwise unused area, soon to become Abbey Ward, on the first floor of Antelope House). It is being relocated to a bedroom downstairs on Hamtun Ward that can be accessed by patients without them having to travel into or past any ward areas. This is a positive step in terms of enhancing our patient journey. The new 136 Suite will also have access to a garden, which our current suite does not have.

Engagement with patients and staff

We are continuing to engage with both our service users and staff throughout this process.

As building works begin on Hamtun Ward, we have taken steps to minimise noise disruption such as encouraging patients to participate in off-ward activities and asking the construction team to have regular periods of rest between the works. We have also been communicating regularly with patients so they understand the timescales and changes.

We have also been arranging a series of staff Q&A Zoom calls so colleagues working at Antelope House can relay any questions they might have about the project. A newsletter has also been developed for staff to keep them updated throughout the project.

Additional refurbishments

In addition to the new mental health beds outlined above, we also have a number of refurbishments taking place across our estate, to replace dormitory provision with more en-suite accommodation for greater privacy and a more therapeutic environment.

Gosport War Memorial Hospital

On Poppy Ward (at Gosport War Memorial Hospital) these refurbishments have now been completed with the ward opening on 14 June. The refurbished ward was designed with the help of staff, patients and their carers/families and boasts state-of-the-art facilities including: 14 individual bedrooms with en-suites/assisted bathrooms, clinical space, a patient therapy room, a brand new patient dining room and kitchen, office space for doctors, nurses and managers, plus a beautifully designed garden space.

The next phase of refurbishments at Gosport War Memorial Hospital (on Rose Ward) are likely to be completed later this year.

Parklands

At Parklands, refurbishments on Hazel Ward (our Psychiatric Intensive Care Unit) and Juniper Ward (our acute mental health ward) are now underway.

The refurbishment will ensure all accommodation provides greater privacy for patients. To enable us to achieve these improvements, we will need to reduce the overall number of beds on Juniper Ward from 23 to 18. However, creating the new ward for females with acute mental health needs means that the number of mental health beds at Parklands overall, will increase from 69 beds to 82. It is important to note that this marginal bed reduction will not directly affect our patient admissions or the required staffing but will slightly increase the nurse to patient ratio and therapeutic output, allowing staff to provide more one-to-one care to our patients.

Melbury Lodge

Plans are currently in development to refurbish Kingsley Ward, Stefan Olivieri Ward and the Mother and Baby Unit at Melbury Lodge in Winchester. These plans are at an earlier stage than our other refurbishments with staff being consulted on designs before sharing with our patients. It is hoped that these improvements will be complete by the end of 2022.

For further information

For more information, please contact communications@southernhealth.nhs.uk.